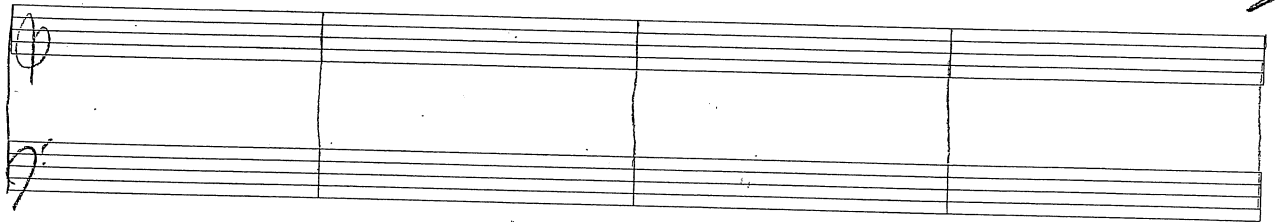


2

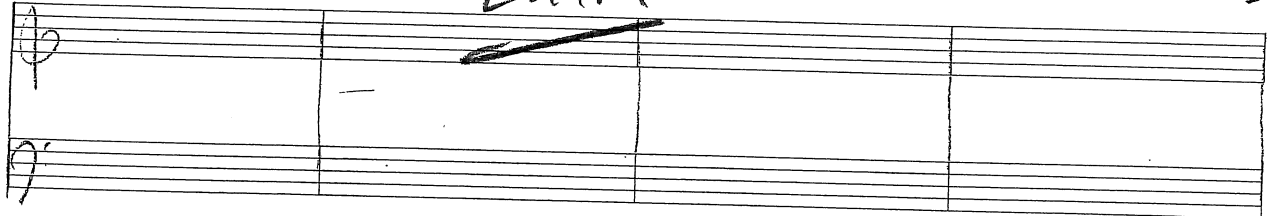
2



2

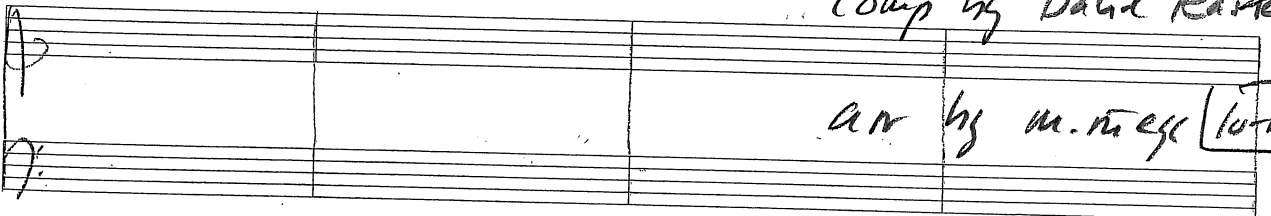
2

Laura



2

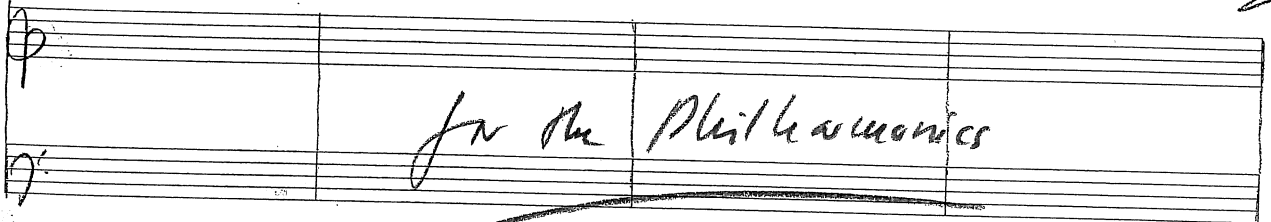
comp by David Rafter



arr by M. Tress (10-11-12)

2

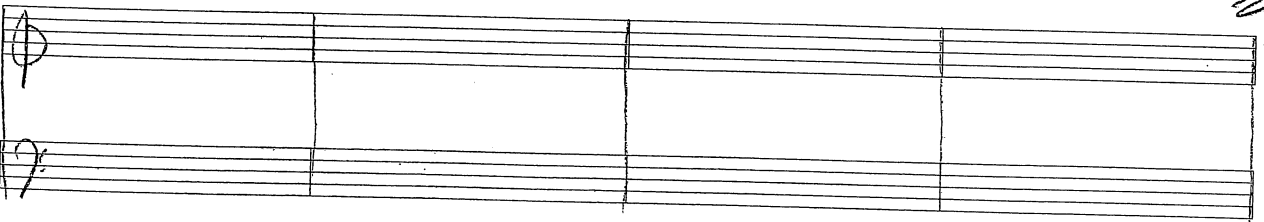
2



for the Philharmonics

2

2



Lucia zu LAURA

ca. 1'30"

molto cantabile!

cello-Solo

Handwritten musical notation for the first system, featuring a cello staff with various dynamics and performance markings.

mp *arco* *arco* *arco* *arco*

Handwritten musical notation for the second system, continuing the cello solo with dynamic markings.

arco *arco* *arco* *arco*

beische triumphal!

Handwritten musical notation for the third system, including dynamic markings and performance instructions.

ff *mf* *ff*

SING für die Damen in der ersten Reihe

Handwritten musical notation for the fourth system, featuring a vocal line and dynamic markings.

mp *mf* *f* *mf*

Handwritten musical notation for the fifth system, showing a vocal line with dynamic markings.

mf

es ist schön, Dem heber zu sein.

Grethe war auch einer!

Handwritten musical notation for the sixth system, including a vocal line and dynamic markings.

mp *p* *mf*

ARCO

Handwritten musical notation for the first system, featuring a treble clef, a 3/4 time signature, and a bass clef. The music includes various notes, rests, and dynamic markings like 'pizz' and 'arco'.

jeder denkt an sich, nur ICH denke an mich!

Handwritten musical notation for the second system, including a treble clef, a 3/4 time signature, and a bass clef. It features notes, rests, and dynamic markings like 'mf' and 'cres'.

decre

Handwritten musical notation for the third system, showing a treble clef, a 3/4 time signature, and a bass clef. The notation includes notes, rests, and dynamic markings like 'ff'.

Laura besorgt ich's einst in
Stadt-Paura

Handwritten musical notation for the fourth system, consisting of a treble clef and a bass clef staff with some notes and rests.

Wald

Handwritten musical notation for the fifth system, featuring a treble clef, a 3/4 time signature, and a bass clef. It includes notes, rests, and dynamic markings like 'pp'.

Handwritten musical notation for the sixth system, consisting of a treble clef and a bass clef staff with some notes and rests.

Viol II

Viol I

Vcllo

Cell

Clarinete

Pf

Bass

Thema

A

mf

[B] Rubato

Viol II

Viol I

Vcllo

Cell

Clarinete

Pf

Bass

[B] Rubato

ARCO